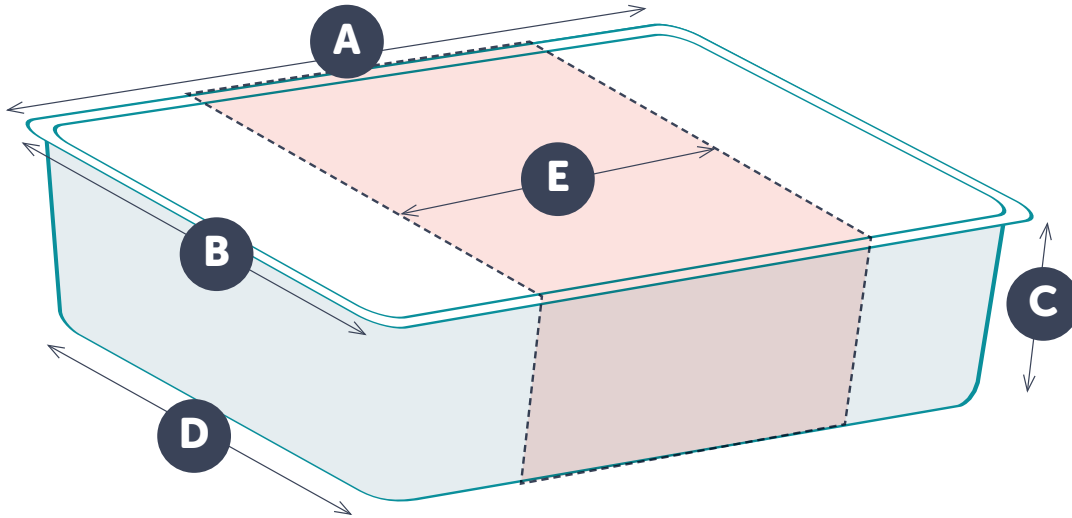


# FOOD CONTAINER SLEEVE MEASUREMENTS GUIDE



A = 

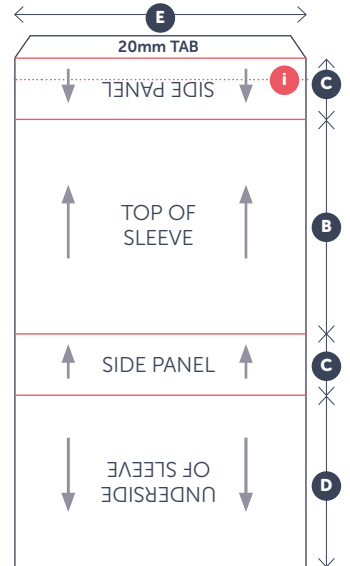
B = 

C = 

D = 

E =

## EXAMPLE:



**i** This is a 'false crease', to enable the sleeves to be folded flat when glued. To calculate the position of this from the tab crease, use this equation:

**B - D ÷ 2**  
 e.g. if B=100, D=80 then position the false crease 10mm down from the 20mm tab crease

↑ Reading orientation for artwork